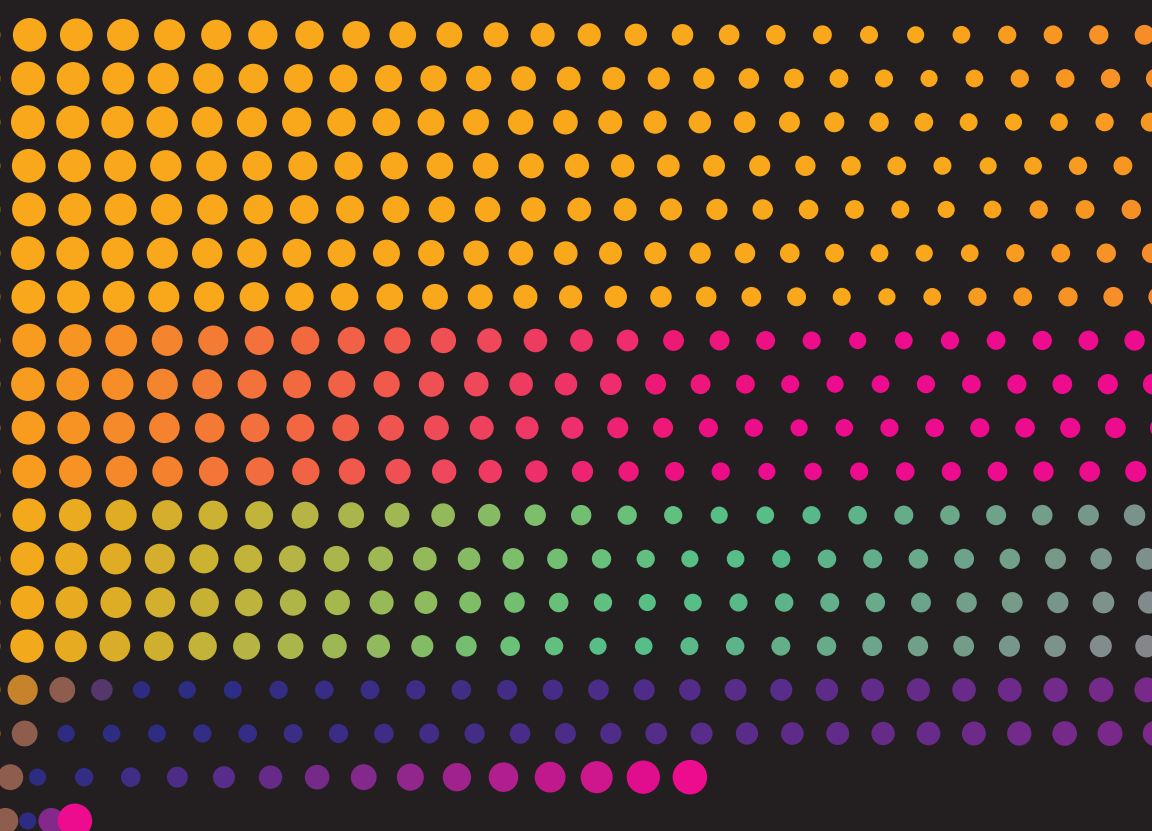




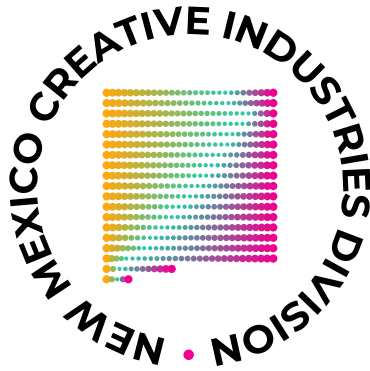
NEW MEXICO  
CREATIVE INDUSTRIES DIVISION

# CREATIVE INDUSTRIES TOOLBOX



ECONOMIC  
DEVELOPMENT  
NEW MEXICO





**New Mexico Economic Development Department  
Creative Industries Division**

Santa Fe:

1100 S. St. Francis Drive, Suite 1242

Albuquerque:

500 Marquette NW Albuquerque, NM 87102 ; 6th floor suite 640

Main number: (505) 827-0300 (se habla español)

Deaf & hard of hearing assistance:

text (505) 827-0300

# TABLE OF CONTENTS

<b>Creative Industries Division (CID)</b>	<b>2</b>
» Mission & Duties	2
» Resource Map & Knowledge Center	2
» Creative Industries Grant Program	3
<b>Community Resources</b>	<b>6</b>
<b>Business Resource Programs</b>	<b>9</b>
» Local Economic Development Act (LEDA)	9
» Job Training Incentive Program (JTIP), Step Up	10
» Food, Hunger, and Agriculture Program	10
» SSBCI, Capital Connect, CAP & Venture Capital	11
» Community Business & Rural Development	12
<b>Regional Rep Contact Map</b>	<b>13</b>
<b>EDD Contact List &amp; Staff Directory</b>	<b>14</b>
<b>Resources By Region</b>	<b>15</b>
» Region 1 (San Juan, McKinley, Sandoval, and Cibola Counties)	15
» Region 2 (Los Alamos, Taos, Rio Arriba, and Santa Fe Counties)	17
» Region 3 (Bernalillo, Torrance, and Valencia Counties)	19
» Region 4 (Colfax, Guadalupe, Harding, Mora, San Miguel, Quay, and Union Counties)	22
» Region 5 (Catron, Dona Ana, Grant, Hidalgo, Luna, Sierra, Socorro Counties)	23
» Region 6 (Chaves, Curry, De Baca, Eddy, Lea, Lincoln, Otero, Roosevelt)	25
<b>Additional Resources</b>	<b>27</b>
» Business Planning, Sell To Government, Technical Assistance	27
» Co-Working Space, Business Accelerators & Incubators	28
» Commercial Kitchens, Makerspaces	31
» Workforce Training / Educational / Quality Programs	33
» Marketing Related Programs, Technology Commercialization	34
» Arts and Creative Councils, Artist Residency & Resources Programs	37
» Finance Development Resources, Investor Incentives, Loans	42
» Grant Programs, NM Tax Incentives, Industry-Specific Tax Credits	45
» Community Development Resources,	46
» Economic Development Organizations (EDOs), Tribal EDOs	48

Welcome to the

# CREATIVE INDUSTRIES TOOLBOX

The **New Mexico Economic Development Department (EDD) Creative Industries Division (CID)** is pleased to offer this publication to provide an overview of resources available to creative businesses and communities throughout New Mexico.

If you need assistance with any programs in New Mexico to help your business or community thrive, your first point of contact is with our Community, Business & Rural Development (CBRD) regional representatives. The regional rep that works within your county can help you navigate these resources and more.

On the following pages, you will find a short description of CBRD services, a service map, and your local contact information. You can also find this information on our website at [EDD.NewMexico.gov/community-development](http://EDD.NewMexico.gov/community-development).

Your local regional rep will have the most up-to-date resources to assist you as your company starts up or grows, or as you build more economic opportunity in your community.

Please visit us online at [edd.newmexico.gov/creative](http://edd.newmexico.gov/creative). You can also sign up to receive bi-weekly EDD updates in our Pathfinder and Creative Industries Newsletters at [edd.newmexico.gov/newsletter](http://edd.newmexico.gov/newsletter).





# NEW MEXICO CREATIVE INDUSTRIES DIVISION

*The Creative Industries Division was created by House Bill 8 in the 2023 Legislature and signed by Gov. Michelle Lujan Grisham on April 5, 2023.*

## **Our Mission:**

As part of the New Mexico Economic Development Department, the Creative Industries Division enhances economic opportunities for New Mexico families by nurturing a vibrant creative economy. We support creative entrepreneurs, small businesses, and organizations through education, workforce development, public infrastructure, grants, and resource sharing.

## **Division Duties:**

- » increase and advance creative industry based economic development in New Mexico
- » support entrepreneurs and small businesses in creative industries
- » assist organizations that support creative industry companies and workers
- » support educational and workforce training initiatives that facilitate creative industry growth and success
- » identify and help establish public infrastructure to support creative industries
- » serve as an information clearinghouse by providing resources and opportunities to creative industry stakeholders
- » act as a liaison between creative industries-related businesses and organizations

[edd.newmexico.gov/creative](http://edd.newmexico.gov/creative)

## **Creative Industries Resource Map**

This platform helps one to find and/or add creative industry-based resources, small businesses and creative economic assets across the state.

[edd.newmexico.gov/business-development/creative-industries/creative-industries-resource-center/](http://edd.newmexico.gov/business-development/creative-industries/creative-industries-resource-center/)



## **Creative Industries Knowledge Center**

This is a repository of information, resources and tools that support the growth and sustainability of New Mexico's creative industries. It offers access to a wide range of materials, articles, and other educational content tailored to the needs of creatives and creative enterprises.

[edd.newmexico.gov/business-development/creative-industries/knowledge-center/](http://edd.newmexico.gov/business-development/creative-industries/knowledge-center/)

## Creative Industries Division Grant Programs

### Creative Support Organization Grant

This funding opportunity is designed for organizations with a demonstrated history of impactful work in supporting creative entrepreneurs and advancing creative industry development across New Mexico. This includes organizations that support creative industry companies and workers. Funding amounts vary.

### Business Development & Expansion Grant

*Recurring grant program for existing creative businesses within one or more of the 6 Creative Industry Division Clusters that is based in New Mexico. Eligible businesses must have a minimum three-year history of operations and be a for-profit entity in good standing. Funding amounts vary.*



[edd.newmexico.gov/cid-grants](http://edd.newmexico.gov/cid-grants)





## NEW MEXICO DEPARTMENT OF CULTURAL AFFAIRS

The **Department of Cultural Affairs** represents New Mexico's dedication to preserving and celebrating the cultural integrity and diversity of our state. The Department oversees a broad range of New Mexico's arts and cultural heritage agencies.

New Mexico Arts funds and supports artists and arts organizations across the state. Programs support arts education, community arts, economic development, and traditional and contemporary arts.

Common grant areas include arts learning, community arts development, economic development, and folk arts.



[www.newmexicoculture.org](http://www.newmexicoculture.org)



The mission of the **Arts Commission**, in conjunction with New Mexico Arts, is to stimulate opportunities for artists, arts organizations, and other groups for activities or projects to provide artistic or cultural services to the state, to maintain and encourage artistic excellence, and to promote awareness of and access to the arts for all the people of New Mexico.

New Mexico Arts funds and supports artists and arts organizations across the state. Programs support arts education, community arts, economic development, and traditional and contemporary arts.

Common grant areas include arts learning, community arts development, economic development, and folk arts.



[nmarts.org](http://nmarts.org)

## Technology & Innovation Office

The **Technology and Innovation Office (TIO)** connects New Mexico innovation to the commercial market. The division leads and execute programs that encourage and enable the startup, growth and relocation of technology-based industries in and to New Mexico by focusing on growing and diversifying existing technology companies, rapidly commercializing technologies, and promoting research and development in emerging technologies.

TIO helps grow New Mexico's technology and innovation sectors. It connects startups and research to commercialization opportunities.

Key programs include startup grants and entrepreneurship support grants for incubators and innovation-focused organizations.

[EDD.NewMexico.gov/TIO](http://EDD.NewMexico.gov/TIO)





## NEW MEXICO MAINSTREET™

NMMS's core objective is downtown revitalization. As a **Main Street America™** Coordinating Program since 1985, NMMS helps communities implement the Main Street Approach™ to transform communities.

NMMS's three economic transformation strategies guide the program's work:

1. Build capacity for local economic revitalization and redevelopment efforts
2. Enhance the entrepreneurial and creative economy
3. Create thriving places

NMMS staff and revitalization specialists work with program partners to engage people, rebuild places, and revitalize economies by providing professional technical assistance that supports asset-based economic development.

Capital Outlay public infrastructure projects leverage private sector reinvestment, make visible upgrades to streets and amenities, improve pedestrian safety, and create vibrant places for economic growth. The Great Blocks on MainStreet program dramatically upgrades 2-3 district blocks in a core commercial area.



[www.nmmainstreet.org](http://www.nmmainstreet.org)

## International Trade

EDD's **International Trade program** assists companies to capitalize on opportunities in the global marketplace by focusing on these key areas. This program helps New Mexico businesses enter global markets. Support includes STEP grants, export assistance, trade missions, and international business consulting.



[EDD.NewMexico.gov/business-development/edd-programs-for-business/international-trade](http://EDD.NewMexico.gov/business-development/edd-programs-for-business/international-trade)

# Film New Mexico

The film and television industry is a key sector of New Mexico's economy, with a significant direct and indirect impact. Productions that film in New Mexico bring revenue into the state and are incentivized to hire residents and buy from local vendors.

New Mexico's refundable tax credit is nationally and internationally competitive. It offers a base of 25%, with a maximum of 40% when production meets specific criteria, such as:

- » Filming outside of Albuquerque and Santa Fe
- » Utilizing a qualified production facility (soundstage or movie ranch)
- » Filming an eligible TV pilot or series

The **New Mexico Film Office** provides workforce development programs, including the Film Crew Advancement Program (FCAP) that helps workers move up and advance their skills and their craft and Operation Soundstage (OSS) that provides a path for veterans to work in the film industry.

We also provide workshops and training programs to prepare residents for the high-wage jobs the industry offers, including an annual screenwriting fellowship with Stowe Story Labs.

A major component of workforce development is the New Mexico Media Arts Collective (NMMAC), established in February 2022. A partnership between EDD, NMFO, the Higher Education Department, and industry partners like Netflix and NBCUniversal, the NMMAC serves as an epicenter for training New Mexicans in specific, high-demand crafts. Upon completion, participants receive paid apprenticeships and can accrue union and guild hours.



[nmfilm.com](http://nmfilm.com)



## NEW MEXICO

OUTDOOR RECREATION DIVISION

The **Outdoor Recreation Division (ORD)** works to sustainably grow the outdoor recreation economy in New Mexico and increase equitable access to the outdoors. The division achieves this through investing in economic and community development, education, and outdoor infrastructure investments.

### Grant programs include:

- » Outdoor Equity Fund (OEF)
- » Outdoor Recreation Trails+ Grant
- » ActivatOR Outdoor Business Accelerator
- » Adventure Pitch Fest



[www.nmoutside.com](http://www.nmoutside.com)

## Justice, Equity, Diversity and Inclusion (JEDI) Office

The **JEDI Office** works to address systemic inequities and create equitable representation for all New Mexico businesses while promoting diversity and inclusion. It addresses the specific concerns of minority-owned business, serves as a liaison, support, and voice for underserved businesses, and connects minority-owned businesses and community organizations in underserved communities with economic development programs, resources, and opportunities.



[EDD.NewMexico.gov/JEDI](http://EDD.NewMexico.gov/JEDI)



The **New Mexico Department of Workforce Solutions** strives to be a leader in improving employment and poverty rates through workforce development, enhanced services for employers, and ensuring fair labor practices and workforce protections for New Mexicans.

This department supports workers and employers through job services, training programs, labor law enforcement, and unemployment insurance.

It also provides labor market data and workforce development programs.

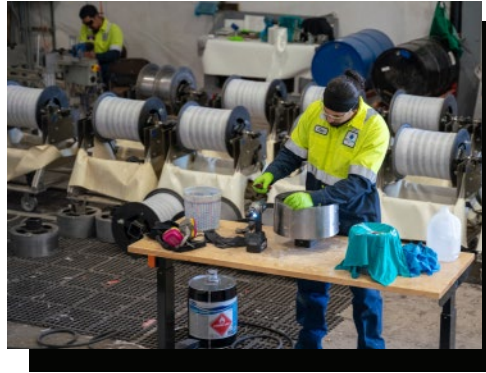


[www.dws.state.nm.us](http://www.dws.state.nm.us)

## Local Economic Development Act (LEDA)

The Legislature has granted EDD the authority to administer the multi-million-dollar LEDA grant fund to assist expanding or relocating businesses. These grants are distributed to a local government to be passed onto the business on a reimbursement basis. The qualifying entity must provide economic impact and public benefit equal to or greater than the amount of the grant.

Economic-base employers deemed eligible for the Job Training Incentive Program (JTIP) may qualify for LEDA. Eligible uses of funds are related to the purchase or development of land, building and infrastructure for the purpose of conducting business in New Mexico.



EDD determines eligibility and provides technical assistance throughout the application and approval processes. All funding decisions are made at the executive level, by the governor's office.

### **LEDA Rural Infrastructure Grants**

EDD may award funding to rural communities when critical infrastructure is needed for economic growth. Publicly owned industrial properties that attract business development are eligible.

### **Gross Receipts Tax Sharing**

LEDA funding, which supports new jobs and investment, will now be sustained by a partial sharing (no more than 50%) of GRT revenues during the construction phase of projects when costs exceed \$350 million. The recapture requires agreement between the state and the participating local government. Multiple small projects can be funded with one large project.

[EDD.NewMexico.gov/LEDA](http://EDD.NewMexico.gov/LEDA)

## Job Training Incentive Program (JTIP)

JTIP funds classroom and on-the-job training for newly-created jobs in expanding or relocating businesses for up to 6 months. Once training is complete, the program reimburses a *minimum* of 50-75% of employee wages during training.

The JTIP program strengthens New Mexico's economy by providing financial incentives to companies that create new economic-base jobs in New Mexico. Training funded by JTIP also elevates the skill level of the New Mexico residents who fill funded positions. Companies may also be eligible for the High Wage and Rural Job Tax Credits.

JTIP reimbursement rates are based on company location, with higher rates in rural and frontier communities, and the potential for additional reimbursement if certain criteria are met.



### Step Up Program

Reimburses JTIP eligible companies for a portion of the cost of upskills training for incumbent workers, up to **\$6,000 per trainee**.

## The Food, Hunger, and Agriculture Program

The mission of the Food, Hunger, and Agricultural Program is to support the intersection of economic development in New Mexico's food and agricultural sector with increased food security for New Mexicans.

**The New Mexico Healthy Food Financing Fund** supports the intersection of economic development in New Mexico's food/agricultural supply chain with increased food security for New Mexicans. HFFF is accepting applications to invest in food retailers, food processors, food hubs/distributors, and climate-smart pre-production projects.

[edd.newmexico.gov/food](http://edd.newmexico.gov/food)

## State Small Business Credit Initiative (SSBCI)

SSBCI federal funding is provided to governments to assist small businesses and empower job-creating opportunities. SSBCI TA, the Collateral Assistance Program (CAP), and the Venture Capital (VC) programs are all made possible through SSBCI funding.

[EDD.NewMexico.gov/SSBCI](http://EDD.NewMexico.gov/SSBCI)

## New Mexico Capital Connect

Capital Connect is a program of EDD's JEDI Office created to help small business owners in New Mexico improve their finances, accounting, and loan preparedness so they can get access to capital to improve their business.

Together with your class, through group workshops and personalized 1-on-1 training with expert consultants, you will learn all aspects of the investment process and be in the best position to secure a loan or grant.

[EDD.NewMexico.gov/capital-connect](http://EDD.NewMexico.gov/capital-connect)

## Collateral Assistance Program (CAP)

CAP encourages banks and other financial institutions to make loans to small businesses in under-served markets. EDD can pledge cash to cover a collateral shortfall of a loan in order to enable financing that otherwise might not be available to a small business. Awards up to \$250,000.

[EDD.NewMexico.gov/CAP](http://EDD.NewMexico.gov/CAP)

## Venture Capital Program (VC)

The Venture Capital Program Fund was created to advance economic development objectives of the state by making investments for startup, expansion, product or market developments, recapitalization, or early-stage development. NMFA is administering the funding in partnership with EDD.

[www.nmfinance.com/venture-capital-program](http://www.nmfinance.com/venture-capital-program)

## Community, Business & Rural Development

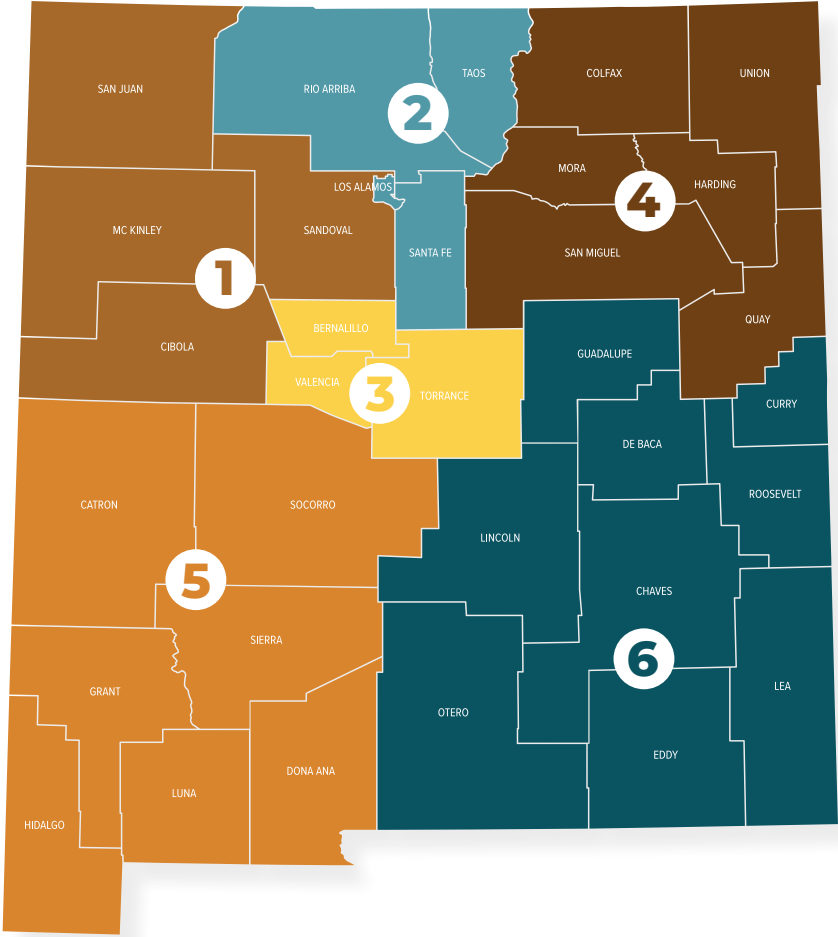
EDD's **Community, Business & Rural Development (CBRD)** staff, or regional reps, are located in the regions they serve throughout the state. They assist businesses and communities in a broad variety of economic development needs:

- » Passing and using the **Local Economic Development Act (LEDA)** to provide local incentives for job creation.
- » Working directly with local governments and businesses throughout the LEDA funding process.
- » Implements the **Business Retention & Expansion Program**.
- » Connects businesses to the **Job Training Incentive Program (JTIP)** team and provides technical assistance through the application process.
- » Business development project funding in collaboration with finance programs.
- » Marketing outreach, education and technical assistance with the **LEADS and Certified EDO programs**.
- » Assist businesses in taking advantage of **New Mexico's tax credit incentives** for job creation.
- » Assist communities in responding to **Potential Recruitment Opportunities (PROs)** from the New Mexico Partnership.
- » Community infrastructure financing assisted by **FUNDIT**, a collaborative group of community development funding agencies who review and vet projects in a single meeting.
- » Resolve state regulatory or other issues that impact businesses.
- » Access to all other EDD programs, including New Mexico MainStreet, New Mexico Film Office, Outdoor Recreation Division, Creative Industries, and more (see programs and divisions listed on the following pages).

[EDD.NewMexico.gov/community-development](http://EDD.NewMexico.gov/community-development)



# For professional economic development assistance contact your **Regional Reps:**



### Region 1: Northwest

Rebecca Hansana  
505-487 0844  
[Rebecca.Hansana@edd.nm.gov](mailto:Rebecca.Hansana@edd.nm.gov)

### Region 2: N. Central

Peter Mitchell  
505-570 7796  
[Peter.Mitchell@edd.nm.gov](mailto:Peter.Mitchell@edd.nm.gov)

Paige Ryan  
505-412-5036  
[Paige.Ryan@edd.nm.gov](mailto:Paige.Ryan@edd.nm.gov)

### Region 3: Central

Yuriria Morales-Mangone  
Habla español  
505-479 2308  
[Yuriria.Morales@edd.nm.gov](mailto:Yuriria.Morales@edd.nm.gov)

Beth Waldrip  
505-470 4339  
[Elizabeth.Waldrip@edd.nm.gov](mailto:Elizabeth.Waldrip@edd.nm.gov)

### Region 4: Northeast

Tim Hagaman  
505-862 2322  
[Tim.Hagaman@edd.nm.gov](mailto:Tim.Hagaman@edd.nm.gov)

### Region 5: Southwest

David White  
575-463-5809  
[David.White@edd.nm.gov](mailto:David.White@edd.nm.gov)

### Region 6: Southeast

Jim Lucero  
575-749-5336  
[Jim.Lucero@edd.nm.gov](mailto:Jim.Lucero@edd.nm.gov)

Kevin Wilson  
575-416 7709  
[Kevin.Wilson@edd.nm.gov](mailto:Kevin.Wilson@edd.nm.gov)



## EDD Contacts

A full staff listing and contact information can be found at [EDD.NewMexico.gov/contact-us/directory](http://EDD.NewMexico.gov/contact-us/directory)

Online contact form: [EDD.NewMexico.gov/contact-us](http://EDD.NewMexico.gov/contact-us)

General email inquiries: [info@EDD.nm.gov](mailto:info@EDD.nm.gov)

Public records requests: [EDD.hripra@edd.nm.gov](mailto:EDD.hripra@edd.nm.gov)

## Partial Staff List

**Rob Black,**  
Cabinet Secretary

**Isaac Romero,**  
Deputy Cabinet Secretary

**Sara Gutiérrez,**  
Economic Development Division Deputy Director

**Chris Chaffin,**  
Director of Communications

**Nora Meyers Sackett,**  
Technology & Innovation Office Director

**Karina Armijo,**  
Outdoor Recreation Division Director

**Steve Graham,**  
New Mexico Film Office Director

**Shani Harvie,**  
Creative Industries Division Director

**Daniel Gutierrez,**  
New Mexico MainStreet Director

**Patrick Gannon,**  
Job Training Incentive Program Manager

**Jennifer Myers,**  
Community, Business, & Rural Development Team Leader

**Erin Ortigoza,**  
Food Hunger, & Agriculture Program Manager

## Councils of Governments

- » Mid Region, (505) 247 1750
- » Northwest, (505) 722 4327
- » South Central (575) 744 0039
- » Southwest, (575) 388-1509
- » Southeastern, (575) 624 6131
- » North Central, (575) 744 0039



## EDD Region 1 Resources

(San Juan, Mckinley, Sandoval, and Cibola Counties)

### Main Streets:

#### Grants MainStreet Project

<https://grantsmainstreetproject.com/>

#### Gallup MainStreet Arts & Cultural District

<https://gallupmainstreet.org/>

#### Historic Downtown Farmington Arts & Cultural District Arts & Culture District

<https://www.fmtn.org/99/Downtown-Farmington>

#### Zuni Pueblo MainStreet

<https://zunipueblomainstreet.org/>

### Chambers of Commerce:

#### Placitas Chamber of Commerce

<http://www.placitas-chamber.org/index.html>

#### Rio Rancho Regional Chamber of Commerce

<https://www.rrrcc.org/>

#### Gallup- Mckinley County Chamber of Commerce

<https://www.thegallupchamber.com/>

#### Grants-Cibola County Chamber of Commerce

<http://www.grants.org/>

### County Creative Business Supports:

#### Sandoval Economic Alliance

<https://www.sea-nm.com/>

#### THE BLOCK (Rio Rancho)

<https://theblocknm.com/>

#### San Juan College Enterprise Center (Farmington)

<https://www.sanjuacollege.edu/community/enterprise-center/>

#### Greater Gallup Economic Development Corporation

<https://www.gallupedc.com/>

## Regional Creative Business Support:

### **Navajo Nation**

<https://www.navajo-nsn.gov/>

### **Acoma Business Enterprises**

<https://www.puebloofacoma.org/https-www-skycity-com/economic-development-office/>

### **Pueblo of Laguna**

<https://www.lagunapueblo-nsn.gov/>

### **Crownpoint Chapter House**

<https://crownpoint.navajochapters.org/>

### **Northwest New Mexico Council of Governments**

<https://www.nwnmcog.org/>

### **Cibola County**

[https://www.cibolacountynm.com/business/economic\\_development.php](https://www.cibolacountynm.com/business/economic_development.php)

### **San Juan County**

<https://www.sjcounty.net/government/economic-development>

### **Sandoval County**

<https://www.sandovalcountynm.gov/departments/economicdevelopment/>

# EDD Region 2 Resources

(Los Alamos, Taos, Rio Arriba, and Santa Fe Counties)

## Main Streets:

### Los Alamos MainStreet and Creative District

<https://www.losalamosmainstreet.com/>

### Taos Mainstreet

<https://www.taosmainstreet.org/>

## Chambers of Commerce:

### Chamber of Commerce – Chama Valley

<http://chamachamber.com/visitor.html>

### Chamber of Commerce – Espanola Valley

<http://www.espanolanmchamber.com/>

### Chamber of Commerce – Los Alamos

<http://losalamoschamber.com>

### Chamber of Commerce – New Mexico Green, Santa Fe

<http://www.nmgreenchamber.com/>

### Chamber of Commerce – Red River

<https://redriverchamber.org/>

### Chamber of Commerce – Santa Fe

<https://www.santafechamber.com/>

### Chamber of Commerce – Taos County

<http://www.taoschamber.com/>

## County Creative Business Supports:

### Santa Fe County

<https://www.santafecountynm.gov/community-development/economic-development>

### Taos County

<https://www.taoscounty.org/474/Economic-Development>

### Taos County Economic Development Corporation

<https://www.tcedc.org/>

### Los Alamos County

<https://www.losalamosnm.us/Doing-Business>

### Rio Arriba County

<https://www.rio-arriba.org/Departments/Departments-Divisions>

## Regional Creative Business Supports:

### **Jemez Valley Business Cooperative**

<https://jemezsprings.org/>

### **LANL Small Business Program**

<https://www.lanl.gov/engage/business>

### **Los Alamos Connect**

<http://losalamosconnect.net/>

### **North Central New Mexico Economic Development District**

<https://www.ncnmedd.com/>

### **Santa Fe Office of Economic Development**

<https://santafenm.gov/economic-development>

### **Santa Fe Community College**

<https://www.sfcc.edu/>

### **Santa Fe Council on International Relations**

<https://www.sfcir.org/>

### **Santa Fe Office of Business Growth**

<https://www.santafenm.gov/>

### **Santa Fe Business Incubator**

<https://sfbi.net/>

### **CreativeMornings - Santa Fe**

<https://creativemornings.com/cities/sfe>

### **Creatives Who Thrive Meetup (Santa Fe)**

<https://www.meetup.com/Creatives-Who-Thrive/>

### **Creative Santa Fe**

<http://creativesantafe.org/>

### **Project Y Cowork (Los Alamos)**

<https://www.projectYLosAlamos.com>

### **The Kitchen Table (Santa Fe)**

<https://www.thekitchentablesantafe.com/>

### **Vital Spaces (Santa Fe)**

<https://www.vitalspaces.org/>

### **Paseo Project (Taos)**

<https://paseoproject.org/about>

### **Fab Lab Hub (Santa Fe)**

<https://fablabhub.org/>

### **Site Santa Fe**

<https://www.sitesantafe.org/en/>

## Main Streets:

### **Downtown ABQ MainStreet and Arts & Cultural District**

<https://dtabqmainstreet.org/>

### **Barelas Mainstreet**

<https://barelas.net/barelas-mainstreet/>

### **Nob Hill Mainstreet**

<https://nobhillmainstreet.org/>

### **Belén Historic Downtown Partnership and Arts & Cultural District**

<https://www.belenmainstreetpartnership.org/>

### **Corrales MainStreet Arts & Cultural District**

<https://visitcorrales.com/>

### **South Valley MainStreet**

<https://www.nmmainstreet.org/program-directory/directors/#>

### **Revitalize San Pedro Partnership**

<https://www.sanpedroabq.org/>

## Chambers of Commerce:

### **Albuquerque Hispano Chamber of Commerce**

<https://www.ahcnm.org/>

### **American Indian Chamber of Commerce of New Mexico, Inc.**

<http://www.aiccnm.com/>

### **Black Chamber of Commerce of New Mexico,**

<https://www.bccofnm.org/>

### **Greater Albuquerque Chamber of Commerce**

<https://greaterabq.com/>

### **Greater Belen Chamber of Commerce**

<https://valenciacountychamber.com/>

### **Los Ranchos Chamber of Commerce**

<http://losranchosnm.gov/chamber-of-commerce/>

### **NM OUT Business Alliance (formerly LGBTQ / Gay Chamber of Commerce),**

<https://www.nmoba.org/>

### **NM Veteran's Chamber Commerce**

<https://www.nmvcc.com/>

### **Old Town Merchants Association**

<http://www.albuquerqueoldtown.com/>

**West Central Community Development Group (formerly ABQ West Chamber),**  
<https://www.wccd.org/>

**FUSE Makerspace,**  
<https://fusemakerspace.org/>

## County Creative Business Supports:

**Bernalillo County**  
<https://www.bernco.gov/economic-development/>

**Valencia County**  
<https://www.co.valencia.nm.us/35/Business>

**Torrance County**  
<https://www.torrancecountynm.org/departments/grant-coordinator>

## Regional Creative Business Supports:

**Albuquerque Regional Economic Alliance**  
<https://www.abq.org/>

**Creative Mornings – Albuquerque**  
<https://creativemornings.com/cities/abq>

**InnovateABQ!**  
<https://www.innovateabq.com/>

**Keshet Ideas and Innovation Community**  
<https://keshetarts.org/ideas-and-innovation/>

**TEDxABQ,**  
<https://www.tedxabq.com/>

**Toastmasters International,**  
<http://www.district23.org/>

**Goodwill GoodSkills,**  
<https://www.goodwillnm.org/goodskills-classes.html>

**Job Training Albuquerque,**  
<https://jobtrainingabq.org/>

**Albuquerque Quality Network,**  
<http://aqnetwork.org/wp/>

**CNM Ingenuity,**  
<https://www.cnmingenuity.org/>

**CNM Workforce Training Center,**  
<https://www.cnm.edu/depts/workforce-training/workforce-training>

**Village of Los Lunas Economic Development Department**

<https://www.loslunasnm.gov/1229/Economic-Development-Division>

**City of Moriarty,**

<https://www.moriartynm.org/>

**City of Edgewood,**

<http://www.edgewood-nm.gov/>

**Pueblo of Isleta,**

<https://www.isletapueblo.com/>

**SparkNM - A Creative Playground and Arts Incubator,**

<https://sparknm.org/>

**Belen Historic Downtown Partnership,**

<https://www.belenmainstreetpartnership.org/>

# EDD Region 4 Resources

(Colfax, Guadalupe, Harding, Mora, San Miguel, Quay, and Union Counties)

## Main Streets:

### Raton MainStreet Arts & Cultural District

<https://ratonmainstreet.org/>

### MainStreet de Las Vegas Arts & Cultural District

<https://www.mainstreetdelasvegas.org/>

### Clayton-Union County Economic Development Partnership

<https://www.cucedp.org/>

### Santa Rosa MainStreet

<https://www.santarosamainstreet.com/>

### Tucumcari MainStreet

<https://www.tucumcarimainstreet.org/>

### Mora MainStreet Arts & Cultural Compound

<https://www.moramainstreet.org/>

## Chambers of Commerce:

### Chamber of Commerce – Raton

<http://www.raton.info/>

### Chamber of Commerce – Angel Fire

<http://www.angelfirechamber.org/>

### Chamber of Commerce – Las Vegas/San Miguel

<https://lasvegasnewmexicochamber.com/>

### Chamber of Commerce – Santa Rosa

<https://visitsantarosanm.com/>

### Chamber of Commerce – Tucumcari / Quay County

<https://tucumcarinm.com/>

## County Creative Business Supports:

**Colfax County** - <https://www.co.colfax.nm.us/>

**Guadalupe County** - <https://www.guadalupecountynm.org/>

**Harding County** - <https://www.hardingcounty.org/index.php>

**San Miguel County** - [https://co.sanmiguel.nm.us/departments/finance/doing\\_business\\_with\\_smc.php#outer-418](https://co.sanmiguel.nm.us/departments/finance/doing_business_with_smc.php#outer-418)

**Quay County** - <https://www.quaycounty-nm.gov/>

# EDD Region 5 Resources

(Catron, Dona Ana, Grant, Hidalgo, Luna, Sierra, Socorro Counties)

## Main Streets:

### **Silver City MainStreet Arts & Cultural District**

<https://silvercitymainstreet.com/>

### **Leap into Lordsburg**

<https://www.leapintolordsburg.com/>

### **Main Street Las Cruces Arts & Cultural District**

<https://downtownlascruces.org/>

### **Deming Luna County MainStreet**

<https://demingmainstreet.org/>

### **MainStreet Truth or Consequences,**

<https://www.torcmainstreet.org/>

## Chambers of Commerce:

### **Chamber of Commerce – Columbus**

<http://columbusnm.org/>

### **Chamber of Commerce – Deming-Luna County**

<http://demingchamber.net/>

### **Chamber of Commerce – Greater El Paso**

<https://www.elpaso.org/>

### **Chamber of Commerce – Greater Las Cruces**

<https://www.lascruces.org/>

### **Chamber of Commerce – Las Cruces Hispanic**

<https://www.lascruceshispanicchamber.com/>

### **Chamber of Commerce – Lordsburg/Hidalgo County**

<http://lordsburghidalgocounty.net/index.html>

### **Chamber of Commerce – Silver City/Grant County**

<http://www.silvercity.org/>

### **Chamber of Commerce – Socorro County**

<http://www.socorrochamber.org/>

### **Chamber of Commerce – Truth or Consequences**

<https://torcchamber.org/>

### **Chamber of Commerce, NM Green, Las Cruces**

<http://www.nmgreenchamber.com/>

## County Creative Business Supports:

### **Deming-Luna County Economic Development**

<https://dlced.com/>

### **Grant County**

<https://grantcountynm.gov/35/Business>

### **Hidalgo County**

<https://hidalgocounty.org/>

### **Luna County**

[https://lunacountynm.us/departments/economic\\_development/index.php](https://lunacountynm.us/departments/economic_development/index.php)

### **Sierra County**

<https://www.sierraco.org/>

### **Socorro County**

<https://www.socorrocounty.net/>

### **Dona Ana County**

<https://www.donaana.gov/>

### **Catron County**

<https://www.catroncounty.us/>

## Regional Creative Business Supports:

### **International Business Accelerator**

<http://www.nmiba.com/>

### **Mesilla Valley Economic Development Alliance (MVEDA)**

<https://www.mveda.com/>

### **NMSU Arrowhead Center**

<https://arrowheadcenter.nmsu.edu/>

### **SCORE Las Cruces**

<https://lascruces.score.org/>

### **CNM Ingenuity**

<https://www.cnmingenuity.org/>

### **CNM Workforce Training Center**

<https://www.cnm.edu/depts/workforce-training/workforce-training>

# EDD Region 6 Resources

(Chaves, Curry, De Baca, Eddy, Lea, Lincoln, Otero, Roosevelt)

## Main Streets:

### **Alamogordo MainStreet,**

<https://www.alamogordomainstreet.org/>

### **Artesia MainStreet Arts & Cultural District,**

<https://www.artesiainmainstreet.com/>

### **Carlsbad MainStreet and Pearl of the Pecos Arts & Cultural District**

<https://www.carlsbadmainstreet.com/>

### **Clovis MainStreet,**

<http://clovismainstreet.org/>

### **Lovington MainStreet,**

<https://lovingtonmainstreet.org/>

### **MainStreet Roswell,**

<https://mainstreetroswell.org/>

### **Ruidoso Midtown Association,**

<https://www.ruidosomidtownassociation.com/>

## Chambers of Commerce:

### **Chamber of Commerce – Alamogordo,**

<https://www.alamogordo.com/>

### **Chamber of Commerce – Artesia,**

<https://www.artesiachamber.com/>

### **Chamber of Commerce – Carlsbad,**

<http://www.carlsbadchamber.com/>

### **Chamber of Commerce – Clovis,**

<https://clovischamber.com/>

### **Chamber of Commerce – Hobbs,**

<http://www.hobbschamber.org/>

### **Chamber of Commerce – Roswell,**

<http://www.roswellnm.org/>

### **Chamber of Commerce – Ruidoso Valley,**

<https://ruidosonow.com/>

## County Creative Business Supports:

### **Chavez County,**

<https://www.chavescounty.gov/>

**Roswell – Chavez County Economic Development Corporation**  
<https://www.chavescounty.net/>

**Curry County,**  
<https://www.currycountynm.gov/>

**De Baca County,**  
<https://www.epcog.org/blank-page-5>

**Eddy County,**  
<https://www.co.eddy.nm.us/>

**Lea County,**  
<https://www.leacounty.net/>

**Lincoln County,**  
<https://www.lincolncountynm.gov/>

**Otero County,**  
<https://co.otero.nm.us/>

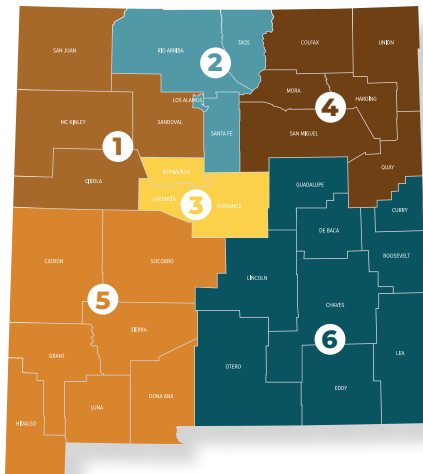
**Roosevelt County,**  
<https://www.rooseveltcounty.com/>

## Regional Creative Business Supports:

**Carlsbad Department of Development,**  
<https://www.developcarlsbad.org/>

**City of Alamogordo,**  
<https://ci.alamogordo.nm.us/>

**The Southeastern New Mexico Economic Development District**  
<https://www.snmedd.com/home/>



**If you think we are missing any creative resources please feel free to add it by submitting the information to our Creative Industries Resource Map:**

<https://startupspace.app/v2/dynamic-survey/view/579/1885>





## Business Planning:

### **Runway at SFBI (Santa Fe)**

A pre-incubation program assists early idea stage individuals or teams in assessing the market potential of their idea.

[www.sfbi.net/programs/runway](http://www.sfbi.net/programs/runway)

### **Semilla Program at SVEDC (South Valley)**

This program helps an entrepreneur verify that their business idea or food product is viable and guide them to successfully launch it.

[www.svedc.org/business-incubation-programs/semilla-program](http://www.svedc.org/business-incubation-programs/semilla-program)

### **Small Business Development Centers (SBDC) (Statewide)**

SBDCs provide a variety of services including counseling, training, and assistance from business planning to international trade.

[www.nmsbdc.org](http://www.nmsbdc.org)

### **Veterans Bureau Outreach Center (VBOC) (Albuquerque)**

VBOCs are a program of the Small Business Administration to provide entrepreneurial development services including business training, counseling, and resource partner referrals to transitioning service members, veterans, National Guard, and reserve members, and military spouses interested in starting or growing a small business.

[www.nmdvs.org/veteran-business-outreach-center](http://www.nmdvs.org/veteran-business-outreach-center)

### **Women's Economic Self-Sufficiency Team (WESST) (Statewide)**

WESST provides a variety of training and programs to assist entrepreneurs in starting and growing their business. - [www.wesst.org](http://www.wesst.org)

## Sell to Governments

### **New Mexico APEX Accelerator (Statewide)**

Formerly NMPTAC, NM APEX offers networking, training, and client support.

They are committed to accelerating business growth and helping entrepreneurs and innovators with government contracting.

[www.nmapexaccelerator.org](http://www.nmapexaccelerator.org)

### **Small Business Development Centers (SBDC) (Statewide)**

SBDCs provide assistance to New Mexico small businesses who need help selling to governments.

[www.nmsbdc.org](http://www.nmsbdc.org)

## Technical Assistance

### **Artshub (Albuquerque)**

Artshub provides technical assistance services to creative businesses, artists, and non-profit organizations to help them with grants, marketing/social media, and support with accessing grants and other funding opportunities.

<https://www.abqartshub.com/>

**New Mexico Manufacturing Extension Partnership (NMMEP) (Albuquerque)**  
NMMEP's experts assist manufacturers in overcoming barriers to growth through training and one-on-one consultations.  
[www.newmexicomep.org](http://www.newmexicomep.org)

**New Mexico Small Business Assistance (NMSBA) (Statewide)**  
NMSBA provides New Mexico small businesses facing technical challenges access to the unique expertise and capabilities of Los Alamos and Sandia National Laboratories. [www.nmsbaprogram.org](http://www.nmsbaprogram.org)

### **SCORE**

SCORE is a national business mentorship program. Services include online courses, webinars, and local workshops. [www.score.org](http://www.score.org)

**US Department of Commerce,  
International Trade Administration New Mexico Commercial Service Office**  
The New Mexico Commercial Service office representative provides technical assistance to companies interested in exporting their products internationally, or those seeking to expand their existing export markets.  
[www.trade.gov/all-services](http://www.trade.gov/all-services)

### **Creative Startups (Santa Fe)**

Creative Startups has been at the forefront of the creative economy since 2008, Creative Startups empowers economic developers and local partners worldwide with strategic plans that promote economic and environmental resilience.  
[www.creativestartups.org/](http://www.creativestartups.org/)

## **Co-Working Spaces**

### **Co-Fe (Santa Fe)**

Flexible co-working space in the Railyard District.  
[www.co-fe.co](http://www.co-fe.co)

### **FatPipe New Mexico (Albuquerque, Rio Rancho, and Taos)**

Flexible offices, meeting areas, events, and classes in a collaborative atmosphere.  
[www.fatpipeabq.com](http://www.fatpipeabq.com)

### **The Midtown Arts and Design Alliance (MADA)**

MADA is a developing community cultural center in Santa Fe that will provide affordable space and accessible programming to creative practitioners and culture bearers of all ages.  
[mada.sfai.org/](http://mada.sfai.org/)

### **Firehouse Workspace (Clovis)**

Offers office space, coworking space, podcast studio rental, and photo studio  
[www.firehouseandcityhall.com](http://www.firehouseandcityhall.com)

### **Dovetail Community Workshop**

Dovetail Community Workshop offers woodworking classes for all skill levels, and memberships to use the shop for their own projects.  
[www.dovetailworkshop.com/](http://www.dovetailworkshop.com/)

### **Project Y Cowork (Los Alamos)**

ProjectY was founded in 2016 under the Los Alamos Commerce and Development Corporation. We are a 501(c)6 non-profit dedicated to improving our unique community.

[www.projectYLosAlamos.com](http://www.projectYLosAlamos.com)

### **Ideas & Coffee Coworking / Southwest Cyberport (Albuquerque)**

[www.ideasandcoffee.com/](http://www.ideasandcoffee.com/)

## **Business Accelerators**

### **ABQid (Albuquerque)**

Identify and develop high-growth, early-stage businesses and invest in them with the knowledge, resources, and connections they need to succeed, including a variety of programming open to the public and a 12-week accelerator program.

[www.innovateabq.com/project/abqid](http://www.innovateabq.com/project/abqid)

### **Arrowhead Sprint Accelerator Programs (New Mexico State University)**

Four accelerators that support technology-based and export-base companies through education, mentorship, and financing in a virtual, cohort-based setting.

[www.arrowheadcenter.org/program/sprints](http://www.arrowheadcenter.org/program/sprints)

### **Creative Startups (Santa Fe)**

Provides customized accelerator programs for the creative economy worldwide.

[www.creativestartups.org/](http://www.creativestartups.org/)

### **IGNITE Community Accelerator (CNM Albuquerque)**

A ten-week program of CNM Ingenuity, Inc. that provides entrepreneurs with the business skills needed to move their companies forward.

[www.cnmingenuity.org/program/ignite-community-accelerator](http://www.cnmingenuity.org/program/ignite-community-accelerator)

### **International Business Accelerator (NMIBA) (Santa Teresa)**

NMIBA is a one-stop shop of resources for New Mexico businesses who wish to increase revenue by introducing their product or service into the global market.

[www.nmiba.com](http://www.nmiba.com)

## **Business Incubators**

### **Arrowhead Center\* (New Mexico State University, Las Cruces)**

Arrowhead's services cover the spectrum of entrepreneurial learning, business creation and growth, and on-campus intellectual property issues.

[www.arrowheadcenter.org](http://www.arrowheadcenter.org)

### **The BioScience Center (Albuquerque)**

Provides offices, ten wet (chemistry and microbiology) labs, and shared facilities that include reception, IT infrastructure, group purchasing, kitchen, shower, and conference space.

[www.thebiosciencecenter.com](http://www.thebiosciencecenter.com)

**Enterprise Center at San Juan College\* (Farmington)**

Includes office and manufacturing space (see Makerspaces), business resources, and acceleration programs.

[www.sanjuancollege.edu/community/departments/enterprise-center](http://www.sanjuancollege.edu/community/departments/enterprise-center)

**NewSpace Launchpad (Albuquerque)**

Provides workspaces, meeting spaces, and equipment specific to the space industry. Includes a prototyping shared space, a cleanroom, a laco thermal vacuum chamber, and 3D printers.

[www.newspacenm.org/newspace-programs/co-innovation-workspaces/#uselaunchpad](http://www.newspacenm.org/newspace-programs/co-innovation-workspaces/#uselaunchpad)

**Navajo Tech Innovation Center (NTIC)\* (Church Rock, Navajo Nation)**

Operated by Navajo Tech University, flexible working spaces and programs for businesses located on the Navajo Nation and northwest New Mexico.

[www.navajotech.edu/ntic](http://www.navajotech.edu/ntic)

**Santa Fe Business Incubator (SFBI)\* (Santa Fe)**

SFBI offers 30,000 SF of office space, lab and light manufacturing space, plus a BioScience Lab and the Archimedes Fab Lab ([sfbi.net/maker-space](http://sfbi.net/maker-space)).

[www.sfbi.net](http://www.sfbi.net)

**South Valley Economic Development Center (SVEDC)\* (Albuquerque)**

Co-working area, office space, meeting space, receptionist service, other shared spaces, and an extensive commercial kitchen.

[www.svedc.org](http://www.svedc.org)

**Taos County Economic Development Corporation (TCEDC)\* (Taos)**

Supports sustainable livelihoods in agricultural and food-related enterprises with resources and training.

[www.tcedc.org](http://www.tcedc.org)

**Valencia County Business Incubator (VCBI) (Rio Communities)**

Office space, conference room access, consulting, a mentorship team, education, training and networking events.

[www.vcbi.org](http://www.vcbi.org)

**WESST Enterprise Center\* (Albuquerque)**

A mixed-use business incubator facility offering state-of-the-art amenities and business assistance programs for up to 20 light manufacturing, service, professional, and technology businesses.

[www.wesst.org/incubation](http://www.wesst.org/incubation)

**Rio Grande Community Development Corporation (Albuquerque)**

The Rio Grande Community Development Corporation (RGCDC) was initiated in 1986 by the Atrisco Land Rights Council and members of the community, to provide a vehicle for public and private resources to serve needs identified by residents and business owners of communities in the unincorporated South Valley of Bernalillo County.

[www.rgcdc.org/](http://www.rgcdc.org/)

## Commercial Kitchens

### **Luna Community College (LCC) Community Kitchen (Las Vegas)**

A facility for people interested in food production and instructors who want to teach culinary classes. [www.luna.edu/community\\_kitchen](http://www.luna.edu/community_kitchen)

### **South Valley Economic Development Center (SVEDC)**

Commercial Kitchen Training (Food Industry Incubation Program [www.svedc.org/business-incubation-programs/food-industry](http://www.svedc.org/business-incubation-programs/food-industry)) and a branding program (Delicious New Mexico [www.deliciousnm.org/food-producers](http://www.deliciousnm.org/food-producers)).

### **Taos Kitchen at TCEDC (Taos)**

Community commercial (licensed) kitchen with storage and production spaces. Offers the Food Sector Opportunities Program. [www.tcedc.org](http://www.tcedc.org)

### **Three Sisters Kitchen (Albuquerque)**

Community kitchen with a Food Business Training Program that provides equipment, training, resources, and industry-specific services to support manufactured food entrepreneurs. [www.threesisterskitchen.org](http://www.threesisterskitchen.org)

### **The Kitchen Table Santa Fe (KTSF)**

Kitchen Table Santa Fe is an accessible affordable fully equipped commercial kitchen designed to empower food entrepreneurs to grow and thrive by renting kitchen space through a membership model and removing the brick-and-mortar hurdle for new businesses looking to produce and sell added value. [www.thekitchentablesantafe.com/](http://www.thekitchentablesantafe.com/)

### **Magic Cookery Commercial Kitchen & Commissary**

Magic Cookery Commercial Kitchen & Commissary is a commissary and commercial kitchen located in Albuquerque, New Mexico that helps food based businesses with access to a kitchen, and support making "gourmet products RETAIL-READY". [www.magiccookery.com/](http://www.magiccookery.com/)

## Makerspaces

### **Cruces Creatives (Las Cruces)**

Tools and space include 3D printers, CNC machines, software, a wood shop, a bicycle shop, a textile lab, a multimedia room for photography and audio recording, an electronics lab and more. [www.crucescreatives.org](http://www.crucescreatives.org)

### **FUSE Makerspace (CNM Albuquerque)**

A hands-on makerspace and engineering lab with everything artists, designers, and businesses need to make an idea come to life. [www.fusemakerspace.org/first-time-at-fuse](http://www.fusemakerspace.org/first-time-at-fuse)

### **Los Alamos Makers (Los Alamos)**

Access to equipment, from basic woodworking to 3D printing, modern manufacturing and biotechnology, classes and one-on-one mentorship. [www.losalamosmakers.org](http://www.losalamosmakers.org)

### **The Big Idea at Enterprise Center - San Juan College (Farmington)**

Woodworking equipment, 3D printing, metalworking equipment, and a technology bench.

[www.sanjuancollege.edu/thebigidea](http://www.sanjuancollege.edu/thebigidea)

### **Make Santa Fe (Santa Fe)**

Access to laser cutters, 3D printers, CNC mills & routers, full metal shop, plasma cutter, complete woodworking shop, blacksmithing, sand casting, and a variety of digital fabrication & prototyping tools.

[www.makesantafe.org](http://www.makesantafe.org)

### **Off Center Community Arts Project (Albuquerque)**

OffCenter has been a beloved art space in ABQ for over 20 years! Founded as an Art Hive in 2001, we've provided free space, supplies, and support to thousands of people from all walks of life to connect and create.

[www.offcenterarts.org/](http://www.offcenterarts.org/)

### **Stark Raven Fabrication (Santa Fe)**

Stark Raven Fabrication is a fabrication shop that specializes in custom creations and installations for museums, galleries, businesses, and private collections. Stark Raven Fabrication.

[www.starkravenfab.com/](http://www.starkravenfab.com/)

### **Fiber Arts on 4th (Albuquerque)**

Fiber Arts on 4th is the hub for loom weaving, spinning, dyeing, basketry, felting, gatherings, workshops, inspiration, and all things fiber arts in New Mexico. We are dedicated to strengthening the amazing community of fiber artists throughout New Mexico by acting as a hub to connect people in the Albuquerque area to all the other amazing fiber arts programs and projects throughout the state.

[www.fiberartson4th.com/](http://www.fiberartson4th.com/)

### **Quelab (Albuquerque)**

Quelab is Albuquerque's makerspace. Our mission is to foster and sustain an environment that promotes creativity, invention, and collaboration at the intersections of science, culture, art, and technology. We support people inventing, learning, tinkering, and conducting citizen science.

[members.quelab.net/](http://members.quelab.net/)

### **Tumbleroot Pottery Pub (Santa Fe)**

Tumbleroot Pottery Pub is a cocktail bar and ceramic makerspace. where friends gather to create with clay while enjoying artisanal libations served in ceramic vessels made by local potters.

[www.tumblerootpottery.com/](http://www.tumblerootpottery.com/)

### **R4Creating STEAM Center of Excellence (Rio Rancho)**

R4 Creating hosts a variety of robotics teams during the late summer to early winter season. From BEST Robotics inspiring older students to engineer from scratch to VEX IQ developing ingenuity and creativity within younger students, there is a program perfect to help your student succeed and grow.

[www.r4creating.org/](http://www.r4creating.org/)

### **The Midtown Arts and Design Alliance (Santa Fe)**

The Midtown Arts and Design Alliance (MADA) is a developing community cultural center in Santa Fe that will provide affordable space and accessible programming to creative practitioners and culture bearers of all ages. MADA is a collaboration of 10+ trusted local and regional non-profits and cultural institutions providing opportunities to participate in and grow the Northern New Mexico creative economy, with a focus on youth, the urban Indigenous population, and emerging cultural entrepreneurs. MADA Supports New Mexico Creative Industries through Workforce Training & Job Creation, Youth & Community Engagement, Connecting Culture, Heritage & Health, and Building a Strong Creative Economy.  
[mada.sfai.org/](http://mada.sfai.org/)

## **Workforce Training / Educational / Quality Programs:**

### **Albuquerque Quality Network,**

<http://aqnetwork.org/wp/>

### **Arrowhead Center at NMSU,**

<https://arrowheadcenter.nmsu.edu/>

### **Association for Talent Development,**

<https://atdnm.org/>

### **CNM Ingenuity,**

<https://www.cnmingenuity.org/>

### **CNM Workforce Training Center,**

<https://www.cnm.edu/depts/workforce-training/workforce-training>

### **Dale Carnegie Management Training,**

<http://newmexico.dalecarnegie.com/>

### **Enterprise Bank and Trust University,**

<https://www.enterprisebank.com/eu>

### **Future Focused Education,**

<https://futurefocusededucation.org/>

### **Goodwill GoodSkills,**

<https://www.goodwillnm.org/goodskills-classes.html>

### **Job Training Albuquerque,**

<https://jobtrainingabq.org/>

### **Job Training Incentive Program,**

<https://gonm.biz/business-development/edd-programs-for-business/>

### **Mission / Graduate,**

<https://missiongraduatenm.org/>

### **NM Career Development Association,**

<http://www.careers-nm.org/>

**NM Center for School Leadership,**  
<http://leadership-pdc.org/blog/>

**NM Counseling Association,**  
<http://www.nmca-nm.org/>

**NM Small Business Development Centers,**  
<http://www.nmsbdc.org/>

**NM Workforce Solutions,**  
<https://www.dws.state.nm.us/en-us/>

**Osher Lifelong Learning Institute at UNM,**  
<http://ce.unm.edu/enrichment/osher/>

**Quality New Mexico,**  
<http://www.qualitynewmexico.org/>

**RENESAN Institute for Lifelong Learning,**  
<https://renesan.org/>

**RioTECH,**  
<https://riotech.rtps.net/>

**TEDxABQ,**  
<https://www.tedxabq.com/>

**Toastmasters International,**  
<http://www.district23.org/>

**UNM Anderson School of Management,**  
<https://www.mgt.unm.edu/>

**UNM Business Academy,**  
<https://business.unm.edu/professionals/anderson-business-academy.html>

**UNM Continuing Education,**  
<http://ce.unm.edu/>

**Workforce Connection of Central New Mexico,**  
<https://www.wccnm.org/>

## **Marketing Related Programs:**

**ABQ Sales Professionals,**  
<https://www.meetup.com/ABQ-Sales-and-Business-Development-Professionals/>

**Albuquerque Press Women,**  
<https://albuquerquepresswomen.org/>

**Albuquerque Wordpress Meetup Group,**  
<https://www.meetup.com/albuquerque-wordpress/>

**American Advertising Federation,**  
<http://www.aafnm.org/>

**Meeting Professionals International,**  
<https://www.mpi.org/chapters/new-mexico>

**NM American Marketing Association,**  
<https://www.nmama.org/>

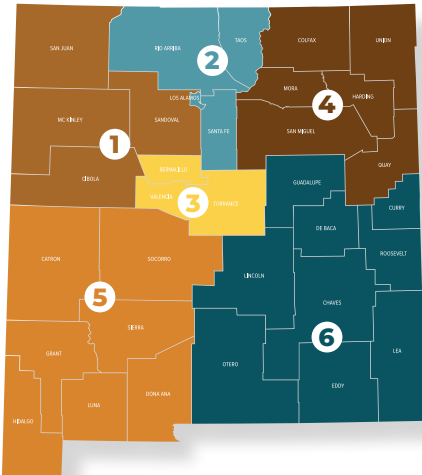
**NM Broadcasters Association,**  
<http://www.nmba.org/cms/>

**NM Press Association,**  
<https://www.nmpress.org/>

**NM Press Women,**  
<http://newmexicopresswomen.org/>

**NM Public Relations Society of America,**  
<https://nmprsa.org/>

**NM Women in Film, TV & Media,**  
<https://www.nmwif.com/>



**If you think we are missing any creative resources please feel free to add it by submitting the information to our Creative Industries Resource Map:**

<https://startupspace.app/v2/dynamic-survey/view/579/1885>



## Technology Commercialization:

New Mexico has a rich environment of research and technology development. Home to three national laboratories and three renowned research universities, each has its own tech transfer office provided below.

- » Partnership or licensing a technology is offered at Los Alamos National Laboratory through the **Richard P. Feynman Center for Innovation**.  
[www.lanl.gov/projects/feynman-center](http://www.lanl.gov/projects/feynman-center)
- » **Sandia National Laboratories** operates 20 Technology Deployment Centers.  
[www.sandia.gov/working-with-sandia/technology-deployment-centers](http://www.sandia.gov/working-with-sandia/technology-deployment-centers)
- » **The Air Force Research Lab** at Kirtland Air Force Base includes the Space Vehicles and Directed Energy Directorates. Air Force and Space Force Tech Connect offers businesses an opportunity to connect with industry science and technology.  
[www.airforcetechconnect.org](http://www.airforcetechconnect.org)
- » **New Mexico State University (NMSU) Office of Intellectual Property and Technology Transfer** at Arrowhead Center protects, manages, and commercializes the creative products of NMSU.  
[www.arrowheadcenter.org/program/intellectual-property](http://www.arrowheadcenter.org/program/intellectual-property)
- » Intellectual property and technology transfer for the University of New Mexico (UNM) is facilitated by **Rainforest Innovations**.  
[www.innovations.unm.edu](http://www.innovations.unm.edu)
- » **The Office of Innovation Commercialization (OIC)** at New Mexico Tech (NMT) is focused on commercializing technology created and developed at NMT.  
[www.nmt.edu/oic](http://www.nmt.edu/oic)
- » **The Technology Commercialization Accelerator** at NMT supports entrepreneurs, inventors, and thinkers wishing to share their creations with the world.  
[www.nmt.edu/tca](http://www.nmt.edu/tca)
- » **The New Mexico Small Business Assistance (NMSBA) Program** provides small businesses facing technical challenges access to the unique expertise and capabilities of Los Alamos and Sandia national laboratories.  
[www.nmsbaprogram.org](http://www.nmsbaprogram.org)

## Arts and Creative Councils

### **Moreno Valley Arts Council**

exec@morenovalleyarts.org

### **Las Vegas Arts Council**

lvac@lasvegasartscouncil.org

### **Sierra County Arts Council**

scacnewmexico@gmail.com

### **Deming Arts Council**

demingarts@hotmail.com

### **Cibola Arts Council - Double Six Gallery**

cibolaarts@7cities.net

### **Mimbres Region Arts Council**

info@mimbresarts.org

### **El Morro Area Arts Council**

emaac@wildblue.net

### **Corrales Cultural Arts Council**

info@musicincorrales.org

### **Dona Ana Arts Council**

admin@daarts.org

### **Albuquerque Fiber Arts Council**

lesash@q.com

### **Taos Center For The Arts**

info@tcataos.org

### **Artesia Arts Council**

director@artesiaartscouncil.com

### **Los Alamos Arts Council**

director@LosAlamosArtsCouncil.org

### **GallupArts**

executivedirector@galluparts.org

### **Northwest New Mexico Arts Council**

nwnmacl@gmail.com

## Artist Residency & Resources Program

### **Artist Communities Alliance**

Artist Communities Alliance (ACA) works to strengthen the artist residency field by conducting research and providing resources to deepen learning around better practices and lessons acquired by on-the-ground failures and successes. ACA hosts programs and events in service to the people who power the artist residency field: administrators, artists and culture bearers. ACA We aspire to provide artists with the resources, information and perspective to make informed decisions and do their best work. The difference between a residency and working in your home studio is more than just time and space.

[www.artistcommunities.org/](http://www.artistcommunities.org/)

### **U.S. Bureau Of Land Management (BLM) Artist In Residency Programs**

The BLM Artist-in-Residence program is founded on the belief that artists look closely at the way the world works, notice things that others may have missed, challenge ideas, experiment, and create new opportunities to look at the world and its resources. Through the program, artists are encouraged to use their observational skills in portraying the variety of cultural and natural resources on BLM lands such as historic structures, artifacts, cultural landscapes, geologic features, and plant and animal life. Ultimately, the artists translate the resources – the heart of BLM’s mission – into images, objects, and performances that bring others enjoyment and forge a deeper understanding of our nation’s public lands. [www.blm.gov/get-involved/artist-in-residence/air-sites](http://www.blm.gov/get-involved/artist-in-residence/air-sites)

### **NMARTS Artist In Residency Program**

Each residency will take place over a six-week period in which the artist resides and works in Cedar Crest, New Mexico. Artists will have access to and are encouraged to interact with the land, culture, visitor center and the surrounding area. The culmination of the residency centers the artist's research and development of new work that showcases ideas and work created during their six-week stay at Sandia Mountain Natural History Center. Public engagement opportunities include, but are not limited to an artist talk or exhibition, workshop, temporary site-specific installations, performances, etc. Artwork and community engagement should be safe and appropriate for both children and adults, ADA compliant, and should not permanently alter the environment when removed.

<https://nmarts.org/all-programs/artist-in-residence/>

### **Roswell Artist-in-Residence Program**

Roswell Artist-in-Residence Program (RAIR) Well known by visual artists as the "Gift of Time", the Roswell Artist-in-Residence Program was established in 1967 to provide gifted studio-based visual artists with the unique opportunity to concentrate on their work in a supportive, collegial environment for an entire year. This gift of time allows artists to work without distraction in an effort to break new ground and focus on individual goals. The Roswell Artist-in-Residence Program's interest is in strengthening the vitality of the visual art in New Mexico and has been a catalyst in broadening community understanding of contemporary art for over fifty years. The Roswell Artist-in-Residence Program offers six artists a place to live and work for a year, with a monthly stipend and no strings attached. Artists-in-residence have the opportunity to mount a solo exhibition of their work at the Roswell Museum, and to have an artwork purchased for the permanent collection of the Anderson Museum of Contemporary Art. Over the past 50 years, the residency has welcomed more than 280 visual artists.

<https://www.rair.org/about-rair>

### **The Frederick Hammersley Artist-in-Residence Program at the Vladem Contemporary**

The Frederick Hammersley Artist-in-Residence Program at the New Mexico Museum of Art Vladem Contemporary represents a return to the original mission of the museum. Over a century ago, the museum offered studio space to visiting contemporary artists. This new program expands the original intent significantly to include artists working in a variety of media and favors community engagement, through educational and social programming that will necessitate interaction between the artist and the public. This program is funded by a generous grant from the Frederick Hammersley Fund for the Arts at the Albuquerque Community Foundation.

<https://www.nmartmuseum.org/artist-in-residence-faq/>

### **The Helene Wurlitzer Foundation of New Mexico**

The Helene Wurlitzer Foundation of New Mexico (HWF) is a private, 501(c)(3) non-profit, educational and charitable organization committed to supporting the arts. Founded in 1954, the HWF manages one of the oldest artist residency programs in the USA. The Foundation's mission is to "Support the artist and the creative process" and serves as a haven for visual artists, literary artists and music composers. The Helene Wurlitzer Foundation is located on fifteen acres in the heart of Taos, New Mexico, a multicultural community renowned for its popularity with artists.

<https://wurlitzerfoundation.org/>

### **Estudio Corazón at Ghost Ranch**

Estudio Corazón at Ghost Ranch is a two to four-week self-directed residency program for artists, writers and creative thinkers. For decades Ghost Ranch has provided sacred space and inspiration for artists of all types in many different mediums. Estudio Corazón, an artist residency program developed in 2020, is designed to give creative people an opportunity to immerse themselves in this majestic landscape. We offer you a serene setting in a secluded part of Ghost Ranch to delve into your creative practice. There are no project or production requirements. Artists are housed in a community of eight rustic, individual casitas. Each casita consists of a living area and a studio. They are side by side in the same building and separated to create distinct yet unified spaces. The shared bathhouse is a short walk from your casita past a fire pit and a star gazing habitat.

<https://www.ghostranch.org/estudio-corazon/>

### **The National Parks Arts Foundation**

The National Parks Arts Foundation (NPAF) works directly with select artists and The National Park Service (and their affiliates) to create unique Artist in Residency programs within the wonders of the National Parks. The NPAF also works closely with museums, galleries, and curators to keep the residency programs relevant to the Art World beyond the parks and bring the highest caliber of artists to the parks. The NPAF has produced over 300 programs and supported over 120 artists through our National Parks Artists in Residence programs

<https://nationalparksartsfoundation.squarespace.com/allresidencies>

### **The Santa Fe Art Institute Residency and Fellowship programs**

The Santa Fe Art Institute Residency and Fellowship programs provide artists, writers, and creative practitioners with time, space, and support to develop new work and exchange ideas that address critical social and cultural issues. Through our International Thematic Residency and specialized fellowship opportunities, SFAI fosters an inclusive community of artists dedicated to creative inquiry, collaboration, and positive social impact.

<https://sfai.org/residency/residency-fellowship-programs/>

### **Harwood Art Center Residency Program**

Harwood Art Center Residency Program supports the creation of new, original, and experimental projects and their culminating public exhibitions, by artists who work at the intersections of art and social inquiry. The resident artist is resourced with a private studio at Harwood for the duration of their yearlong residency, 2 six-week exhibitions, project, promotional, and professional support from our staff, and honoraria to support their time, materials and creative work.

<https://www.harwoodartcenter.org/community-programs/residency-for-art-social-justice/>

### **Valles Caldera National Preserve Artist in Residency**

Valles Caldera National Preserve Artist in Residency is one of more than 50 NPS sites that currently host an Artist in Residence program. Selected artists participate in a two- to four-week residency in historic lodging on-site. Lodging is provided to the artist in exchange for one public art program and one donation of an original piece of art inspired by the residency. Artists are responsible for their own transportation to and from the park, but the National Park Service provides a vehicle for on-site use. Artists are responsible for their own meals; the nearest grocery store is about 35 minutes away in the town of Los Alamos.

<https://www.nps.gov/vall/getinvolved/artist-in-residence-program.htm>

### **Artist In Solitude Residency Program**

Artist In Solitude Residency Program allows time, space, and solitude to artists, writers, actors and creatives who seek a retreat. It is a self-guided creative development residency program in New Mexico. A residency consists of exclusive use of a studio, accommodations, and for up to eight weeks. Residency fees depend on length of stay.

<https://artistinsolitude.com/>

### **The Paseo Project Artist in Residence Programs**

The Paseo Project Artist in Residence Programs bring artists from all over the world to Taos, offering dedicated time and space to pursue their creative work. We offer two distinct residency opportunities: the Paseo @ Hotel Willa Artist in Residence, open to creatives of all media seeking a focused, independent experience, and the Paseo Project AIR Fellowship, which includes a stipend and emphasizes community engagement through a site-specific project. Both programs celebrate the transformative power of art in the unique cultural and natural landscape of Taos.

<https://paseoproject.org/residencies>

### **Chaco Cultrue National Historical Park Artist in Residence Program**

Chaco culture national historical park artist in residency program is an entire ancient metropolis, and one of the vital crossroads of Anasazi-Chacoan culture, the ancestral culture to today's Rio Grande Pueblos. Chaco Culture NHP consists of ten+ ancient village complexes nestled in a long valley of dramatic cliffs and buttes. This park, because it is one of the least visited, is truly a secret jewel for artistic inspiration. Open to all artists, writers musicians, or performance artists.

<https://www.nationalparksartsfoundation.org/chaco-culture>

### **Carrizozo Artists-in-Residence**

The mission of the Carrizozo AIR is to provide space and time to focus on chosen projects in the arts. With a broad definition of 'artist,' the Carrizozo AIR is open to a wide range of artistic mediums and creative ventures. Individuals, couples, friends, collaborative teams, and families are welcome. The Residency promises solitude as well as interaction with Carrizozo's public, community organizations, and artists.

<https://carrizozoarts.com/air>

### **The Olamina Global Residency**

The Olamina Global Residency is an international artist residency, multimedia art studio, healing arts space and education center supporting social artists, activists, cultural workers and their community allies. The Residency opens it's application each winter for Spring residences and each summer for Fall residency. Up to 12 residents are selected each season to spend between 1-3 weeks or 1-3 month at Olamina. Residents are selected by a group of advisors, and members of Earthseed Black Arts Alliance based on merit, need, and program goals. Priority is given to people of the global majority, under-served communities, and BIPOC and Indigenous artists. The residency is a low to no-cost program based on an anti-racial capitalist model that prioritizes mutual exchange in lieu of cash based transaction. As such, residency fees/exchange are determined by each individual upon admission. Cross cultural dialogue and inter-community relationships are central to the residency time, as well as time and space for rest, vision and re-centering. There is no requirement to produce or present work as a part of the residency, however, materials and studio space are provided for all residents to explore and enjoy during their time. Opportunities for exhibition, performance, presentation, and community engagement are also available to residents as desired.

<https://olaminaglobalarts.org/residency>

## Finance Development Resources:

### **New Market Tax Credits (NMTC)**

Loan funds dedicated solely to New Mexico businesses. Combined with other financing mechanisms and funding sources to provide businesses in a qualified census tract with a below market financing tool.

[www.nmfinance.com/business-financing/new-markets-tax-credits](http://www.nmfinance.com/business-financing/new-markets-tax-credits)

### **New Mexico Angels**

Nonprofit New Mexico-based group of individual accredited angel investors focused on investing in early stage companies.

[www.nmangels.com](http://www.nmangels.com)

### **New Mexico Catalyst Fund**

A \$20M fund-of funds investment vehicle.

[www.sunmountaincapital.com/nm-catalyst-fund](http://www.sunmountaincapital.com/nm-catalyst-fund)

### **New Mexico Community Capital (NMCC)**

Provides investment, management, and consulting experience to existing companies serving emerging or underserved markets that have high growth potential.

[www.nmccap.org](http://www.nmccap.org)

### **Flywheel Ventures**

Leverages its investment team's technology expertise and entrepreneurial experience to fuel the commercialization of globally-recognized R&D and science assets around the world.

[www.flywheelventures.com](http://www.flywheelventures.com)

### **The Verge Fund**

Invests in regional southwestern companies, with priority on New Mexico companies. Investments are made in the seed or first round with active involvement in the company and later-stage investments in follow-on rounds of existing portfolio companies. Its focus is on technology businesses.

[www.vergefund.com](http://www.vergefund.com)

### **Cottonwood Technology Fund**

Focuses on high-tech technology/hard science (patent/IP based) robotics, photonics, telecom, optics, automotive, clean energy, sensor technology, high-tech health, nanotechnology, chemicals, and advanced materials.

[www.cottonwood.vc](http://www.cottonwood.vc)

## Investor Incentive Programs:

### **EB-5 Immigrant Investor Program**

Entrepreneurs (and their spouses and unmarried children under the age of 21) are eligible to apply for a green card (permanent resident) if they make a necessary investment in a commercial enterprise in the U.S. and plan to create or preserve 10 permanent full-time jobs for qualified U.S. workers.

[www.uscis.gov/eb-5](http://www.uscis.gov/eb-5)

### **Opportunity Zones (OZ)**

Designation as an OZ allows for an investment vehicle with tax advantages. The purpose of these advantages is to attract capital investment into economically distressed areas.

[www.nmfundit.org/opportunity-zones](http://www.nmfundit.org/opportunity-zones)

## Loans:

### **DreamSpring**

Loans from \$200 to \$50,000 and support to self-employed individuals who have limited or no access to traditional business credit. Services include networking, marketing, training, leadership development, individual mentorship, and credit counseling and coaching.

[www.dreamspring.org](http://www.dreamspring.org)

### **Capital Certified Development Corporation**

A private, nonprofit provider of small business financing throughout Texas and New Mexico. Works with small businesses and financial institutions to assist with financing of building acquisitions, construction projects, and machinery and equipment loans as a facilitator of the SBA's 504 Loan Program.

[www.capitalcdc.com](http://www.capitalcdc.com)

### **Enchantment Land Certified Development Corporation (ELCDC)**

A nonprofit licensed by the Small Business Administration (SBA) to administer the SBA 504 Loan Program, which provides small businesses with up to 90% financing for certain expansion activities.

[www.elcdc.com](http://www.elcdc.com)

### **LiftFund**

Helps individuals who do not have access to capital from typical lending sources. Provides small business loans and educational services. Funds up to \$50k for start ups; up to \$1M for small businesses.

[www.liftfund.com](http://www.liftfund.com)

### **Loan Fund**

Provides loans, capacity building, and technical assistance to business owners and nonprofit organizations. Loans are provided for equipment, inventory, building renovations, and operating capital, as well as to nonprofits for bridge

financing against awarded private and public contracts, capital improvements, and equipment. Funding amount: up to \$50,000.

[www.loanfund.org](http://www.loanfund.org)

### **Statewide Economic Development Finance Act (SWEDFA)**

Authorizes the Finance Authority to issue bonds, make loans, and provide loan and bond guarantees on behalf of private for-profit and nonprofit entities.

In 2005, the Finance Authority created the Smart Money Loan Participation Program, a business lending program designed to use a \$5.1 million appropriation to create greater access to capital.

[www.nmfinance.com/business-financing](http://www.nmfinance.com/business-financing)

### **Rural Community Assistance Corp. (RCAC)**

Small Business Loan Program Assists businesses in retaining or creating jobs in rural communities of 50,000 or less. Offers short-term loans for working capital, lines of credit, and long-term

loans for real estate and equipment.

[www.rcac.org/lending/small-business-loans](http://www.rcac.org/lending/small-business-loans)

### **Nusenda COOP Capital**

A micro-loan program that relies on trusted relationships between partner organizations and the communities they serve. The partner organization sponsors a low-interest loan through its credit union deposit account and the credit union provides the origination, servicing and credit reporting. Partner organizations decide whether to make the loan based on their own criteria.

[www.nusendafoundation.org/partner-programs/co-op-capital](http://www.nusendafoundation.org/partner-programs/co-op-capital)

### **Small Business Administration (SBA)**

Works with lenders to provide loans to small businesses. SBA reduces risk for lenders and makes it easier for them to access capital, which makes it easier for small businesses to get loans.

[www.sba.gov/funding-programs/loans](http://www.sba.gov/funding-programs/loans)

### **USDA Business and Industry Loan Guarantee Program**

Provides businesses with a loan guarantee up to 80% for existing businesses with a maximum loan amount of \$5 million. Will finance businesses with working capital, machinery, equipment, and fixtures and commercial real estate. Organizations must be located in rural areas under 50,000 and non-urbanized areas.

[www.rd.usda.gov/programs-services/business-industry-loan-guarantees](http://www.rd.usda.gov/programs-services/business-industry-loan-guarantees)

## Grant Programs:

### **USDA Rural Energy for America Program**

Provides guaranteed loan financing and grant funding to agricultural producers and rural small businesses for renewable energy systems or to make energy efficiency improvements. [www.rd.usda.gov/programs-services/rural-energy-america-program-renewable-energy-systems-energy-efficiencyfinancing](http://www.rd.usda.gov/programs-services/rural-energy-america-program-renewable-energy-systems-energy-efficiencyfinancing) against awarded private and public contracts, capital improvements, and equipment. Funding amount: up to \$50,000. [www.loanfund.org](http://www.loanfund.org)

### **USDA Value Added Producer Grant**

Helps agricultural producers enter into value-added activities related to the processing and/or marketing of bio-based, value-added products. [www.rd.usda.gov/programs-services/value-added-producer-grants](http://www.rd.usda.gov/programs-services/value-added-producer-grants)

### **Regional Development Corporation (RDC) Micro-Grant Fund**

Awards are made on a competitive basis and are intended to provide small infusions of capital that allow a business to diversify, sustain or grow revenue, lever-age other investments, and put proper systems in place that lead to growth in order to create opportunities for job seekers who want to stay in the region. The RDC provides technical support and information on other funding opportunities to all applicants. [www.rdcnm.org/microgrant-fund](http://www.rdcnm.org/microgrant-fund)

## **New Mexico Tax Incentives**

For updated information, visit [www.tax.newmexico.gov](http://www.tax.newmexico.gov)

### **High Wage Jobs Tax Credit**

A taxpayer who is an eligible employer may apply for and receive a tax credit for each new high-wage economic-base job. The credit amount equals 8.5% of the wages and benefits paid for each new economic-base job created, up to \$12,750 per job.

To qualify, jobs must pay at least \$40,000/year in a community with a population of less than 60,000 or pay at least \$60,000/year in a community with a population of 60,000 or more; and be occupied for at least 44 weeks by the employee. Employers/positions must be eligible for the Job Training Incentive Program.

The credit can be applied to the state portion of the gross receipts tax, compensating tax, and withholding tax. Any excess credit will be refunded to the taxpayer.

### **Rural Job Tax Credit**

This credit can be applied to taxes due on state gross receipts, corporate income, or personal income tax. Rural New Mexico is defined as any part of the

state other than Los Alamos County; certain municipalities: Albuquerque, Rio Rancho, Farmington, Las Cruces, Roswell, Santa Fe, and a 10-mile zone around those municipalities.

To qualify, companies must manufacture or produce a product in New Mexico and be a non-retail service companies that exports a substantial percentage of services out of state (50% or more revenues and/or customer base). Certain green industries may also qualify.

The percentage of tax credit is dependent upon location.

## Industry-Specific Tax Credits:

- » Advanced Energy Deduction & Advanced Energy Tax Credit
- » Aircraft Deduction
- » Alternative Energy Product Manufacturer's Tax Credit
- » Angel Investment Credit
- » Biodiesel Blending Facility Tax Credit
- » Biomass-Related Equipment & Materials Deduction
- » Consumables Gross Receipts Tax Deduction for Manufacturers
- » Film Post-Production Services Tax Credit
- » Investment Tax Credit for Manufacturers
- » Locomotive Fuel Gross Receipts & Compensating Tax Deduction
- » Military Acquisition Program Tax Deduction
- » Renewable Energy Production Tax Credit
- » Rural Software Development Gross Receipts Tax Deduction
- » Single Sales Factor
- » Spaceport-Related Activities Gross Receipts Tax Deductions
- » Technology Jobs and Research and Development Tax Credit
- » Technology Readiness Gross Receipts Initiative
- » Web Hosting Gross Receipts Tax Deduction

## Community Development Resources:

### **Economic Development Administration (EDA)**

EDA's Public Works program empowers distressed communities to revitalize, expand, and upgrade their physical infrastructure to attract new industry, encourage expansion, diversify economies, and retain long-term, private sector jobs and investment.

[www.eda.gov](http://www.eda.gov)

### **Environmental Protection Agency (EPA) Brownfields Program**

Provides direct funding for brownfields assessment, cleanup, revolving loans, environmental job training, technical assistance, training, and research.

[www.epa.gov/brownfields](http://www.epa.gov/brownfields)

### **Community Development Block Grant (CDBG)**

Provides communities with resources to address a wide range of unique community development needs.

[www.hud.gov/program\\_offices/comm\\_planning/cdbg](http://www.hud.gov/program_offices/comm_planning/cdbg)

### **Clean Water State Revolving Loan Fund**

Provides low-cost financial assistance for wastewater and storm water drainage projects that protect surface and ground water. Funds may be used for the planning, designing and construction of publicly owned treatment works.

[www.env.nm.gov/construction-programs/clean-water-state-revolving-fund-cwsrf](http://www.env.nm.gov/construction-programs/clean-water-state-revolving-fund-cwsrf)

### **Rural Infrastructure Revolving Loan Program**

Funding can be used for water, wastewater and water pollution control projects. The maximum loan amount is \$2M per entity per year. Specifically for communities with a population less than 20,000 or counties with less than 200,000.

[www.env.nm.gov/construction-programs/rural-infrastructure-program](http://www.env.nm.gov/construction-programs/rural-infrastructure-program)

### **Public Project Revolving Fund (PPRF)**

Finances public projects such as water system upgrades and other infrastructure improvements, fire and law enforcement equipment, and public buildings. Both market rate based loans and loans to disadvantaged communities at subsidized rates are made from PPRF funds.

[www.nmfinance.com/public-infrastructure-capital-financing](http://www.nmfinance.com/public-infrastructure-capital-financing)

### **Tribal Infrastructure Fund**

A grant program to assist Tribes with infrastructure needs. Planning project awards range from \$20,000 to \$200,000, design projects from \$50,000 to \$400,000, and construction from \$75,000 to \$1.6M.

[www.iad.state.nm.us/policy-and-legislation/programs-and-funding/tribal-infrastructure-fund](http://www.iad.state.nm.us/policy-and-legislation/programs-and-funding/tribal-infrastructure-fund)

### **Communities Facilities Loan Program**

This program offers short-term loans for early property acquisition and predevelopment, interim construction costs and long-term permanent financing. Priority is giving to projects that incorporate significant green methods and materials.

[www.rcac.org/lending/community-facility-loans](http://www.rcac.org/lending/community-facility-loans)

### **MFA's Community Development Department Housing Programs**

Programs provide specialized housing for specific populations and that help preserve New Mexico's housing stock. These include emergency homeless housing and assistance, housing rehabilitation and weatherization, housing for people with AIDS, and housing for individuals with physical disabilities or mental health issues.

[www.housingnm.org/community\\_development/community-development](http://www.housingnm.org/community_development/community-development)

## **U.S. Department of Housing and Urban Development (HUD)**

Discretionary funding through over 20 grant programs, including Affordable Housing Development and Preservation, Community and Economic Development, Environment and Energy, Fair Housing, Homelessness, Homeownership, Rental Assistance, Supportive Housing and Services, and more.

[www.hud.gov](http://www.hud.gov)

## **Certified Economic Development Organizations:**

The Certified Economic Development Organization program was created to recognize excellence in EDOs, heighten the visibility of the economic development process in New Mexico, build capacity for EDOs, and encourage professional development among New Mexico's economic developers. Through the Certified EDO program, EDD assists local EDOs to build capacity within their organizations so that they are equipped to provide Economic Development services and support their communities. The program emphasizes the importance of having a strong, well-rounded, and well-prepared EDO at the community level.

[EDD.newmexico.gov/community-development/edo-cert](http://EDD.newmexico.gov/community-development/edo-cert)

## **Economic Development Organizations (EDOs)**

- » **City of Albuquerque ED**  
[www.cabq.gov](http://www.cabq.gov)
- » **Albuquerque Regional Economic Alliance (AREA)**  
[www.abq.org](http://www.abq.org)
- » **Artesia Chamber of Commerce**  
[www.artesiachamber.com](http://www.artesiachamber.com)
- » **Carrizozo Works, Inc.**  
[Carrizozoworks.org](http://Carrizozoworks.org)
- » **City of Belen**  
[www.belen-nm.gov](http://www.belen-nm.gov)
- » **Town of Bernalillo**  
[www.tobnm.gov](http://www.tobnm.gov)
- » **Carlsbad Dept. of Development**  
[www.developcarlsbad.org](http://www.developcarlsbad.org)
- » **Cibola Communities EDF**  
[cibolaedc.com](http://cibolaedc.com)
- » **Clovis Economic Development**  
[clovisnm.org](http://clovisnm.org)
- » **Deming Luna County ED**  
[dlced.com](http://dlced.com)
- » **Estancia Valley EDA**  
[evedanm.com](http://evedanm.com)
- » **City of Farmington ED**  
[www.fmtn.org](http://www.fmtn.org)
- » **Four Corners ED, Inc.**  
[4cornersed.com](http://4cornersed.com)
- » **Greater Gallup EDC**  
[www.gallupedc.com](http://www.gallupedc.com)
- » **Harding County EDC**  
[www.hardingcounty.org](http://www.hardingcounty.org)
- » **City of Las Cruces**  
[www.las-cruces.org](http://www.las-cruces.org)
- » **City of Las Vegas**  
[www.lasvegasnm.gov](http://www.lasvegasnm.gov)
- » **Las Vegas San Miguel CoC**  
[www.lasvegasnm.com](http://www.lasvegasnm.com)
- » **Los Alamos County ED**  
[www.losalamosnm.us](http://www.losalamosnm.us)
- » **Village of Los Lunas ED**  
[acomunitythatworks.com](http://acomunitythatworks.com)
- » **Lovington EDC**  
[www.lovingtonedc.org](http://www.lovingtonedc.org)
- » **Luna County**  
[www.lunacountynm.us](http://www.lunacountynm.us)

- » **Mesilla Valley EDA**  
[www.mveda.com](http://www.mveda.com)
- » **Middle Rio Grande EDA**  
[mrgeda.com](http://mrgeda.com)
- » **Village of Milan**  
[www.villageofmilan.com](http://www.villageofmilan.com)
- » **Northeast New Mexico EDO**  
[www.needo-nm.org](http://www.needo-nm.org)
- » **Questa EDF**  
[www.loanfund.org/questa-economic-development-fund](http://www.loanfund.org/questa-economic-development-fund)
- » **Regional Development Corp**  
[www.rdcnm.org](http://www.rdcnm.org)
- » **Rio Arriba County**  
[www.rio-arriba.org](http://www.rio-arriba.org)
- » **City of Rio Rancho**  
[rrnm.gov](http://rrnm.gov)
- » **Roosevelt County CDC**  
[rooseveltcdc.org](http://rooseveltcdc.org)
- » **Roswell-Chaves County EDC**  
[www.chavescounty.net](http://www.chavescounty.net)
- » **Sandoval County**  
[www.sandovalcountynm.gov](http://www.sandovalcountynm.gov)
- » **Sandoval Economic Alliance**  
[sea-nm.com](http://sea-nm.com)
- » **City of Santa Fe**  
[www.santafenm.gov](http://www.santafenm.gov)
- » **Santa Fe County**  
[www.santafecountynm.gov](http://www.santafecountynm.gov)
- » **Clayton-Union County EDP**  
[unionnm.us/cuced](http://unionnm.us/cuced)

## Tribal EDOs

- » **American Indian Chamber of Commerce of New Mexico**  
[www.aiccnm.com](http://www.aiccnm.com)
- » **Indian Pueblo Cultural Center**  
[www.indianpueblo.org](http://www.indianpueblo.org)
- » **All Pueblo Council of Governors**  
[www.apcg.org](http://www.apcg.org)
- » **Pueblo of Acoma**  
[www.puebloofacoma.org](http://www.puebloofacoma.org)
- » **Cochiti Pueblo**  
[www.cochiti.org](http://www.cochiti.org)
- » **Pueblo of Isleta**  
[www.isletapueblo.com](http://www.isletapueblo.com)
- » **Jemez Enterprises**  
[www.jemezenterprises.com](http://www.jemezenterprises.com)
- » **Laguna Development Corp.**  
[www.lagunadevcorp.com](http://www.lagunadevcorp.com)
- » **Nambé Pueblo Development Corp.**  
[www.nambepueblo.org](http://www.nambepueblo.org)
- » **Pueblo of Pojoaque**  
[www.pojoaque.org](http://www.pojoaque.org)
- » **Pueblo of Sandia**  
[www.sandiapueblo.nsn.us](http://www.sandiapueblo.nsn.us)
- » **Santa Ana Tamaya Ventures**  
[www.tamayaventures.com](http://www.tamayaventures.com)
- » **Santa Clara Development Corp.**  
[www.santaclaradevcorp.com](http://www.santaclaradevcorp.com)
- » **Taos Pueblo**  
[www.taospueblo.com](http://www.taospueblo.com)
- » **Tesuque Development Corp.**  
[www.tesuquecasino.com](http://www.tesuquecasino.com)
- » **Ysleta del Sur Pueblo Department of Economic Development**  
[www.ysletadelsurpueblo.org](http://www.ysletadelsurpueblo.org)
- » **Dine Development Corp.**  
[www.ddc-dine.com](http://www.ddc-dine.com)
- » **Navajo Nation DED**  
[www.navajoconomy.org](http://www.navajoconomy.org)
- » **Mescalero Development Corp.**  
[www.mescaleroapachetribe.com](http://www.mescaleroapachetribe.com)
- » **Fort Sill Apache Development Corp.**  
[www.fortsillapache-nsn.gov](http://www.fortsillapache-nsn.gov)

Find a full list of EDOs at [financenewmexico.org/resources/general-business-assistance/regional-economic-development-organizations](http://financenewmexico.org/resources/general-business-assistance/regional-economic-development-organizations)

# ECONOMIC DEVELOPMENT IS A TEAM SPORT





























The logo for the New Mexico Creative Industries Division is a circular emblem. The words "NEW MEXICO CREATIVE INDUSTRIES DIVISION" are written in white, uppercase letters around the perimeter of the circle. In the center of the circle is a stylized representation of the state of New Mexico, composed of a grid of small dots in various colors including yellow, orange, pink, and purple.

NEW MEXICO CREATIVE INDUSTRIES DIVISION

“  
**As New Mexico leans into the creative industries as a viable path for diversified economic and community development, we find a place of deep futures and deep pasts. We find a place where tomorrow’s creatives can get their best start today.**  
”